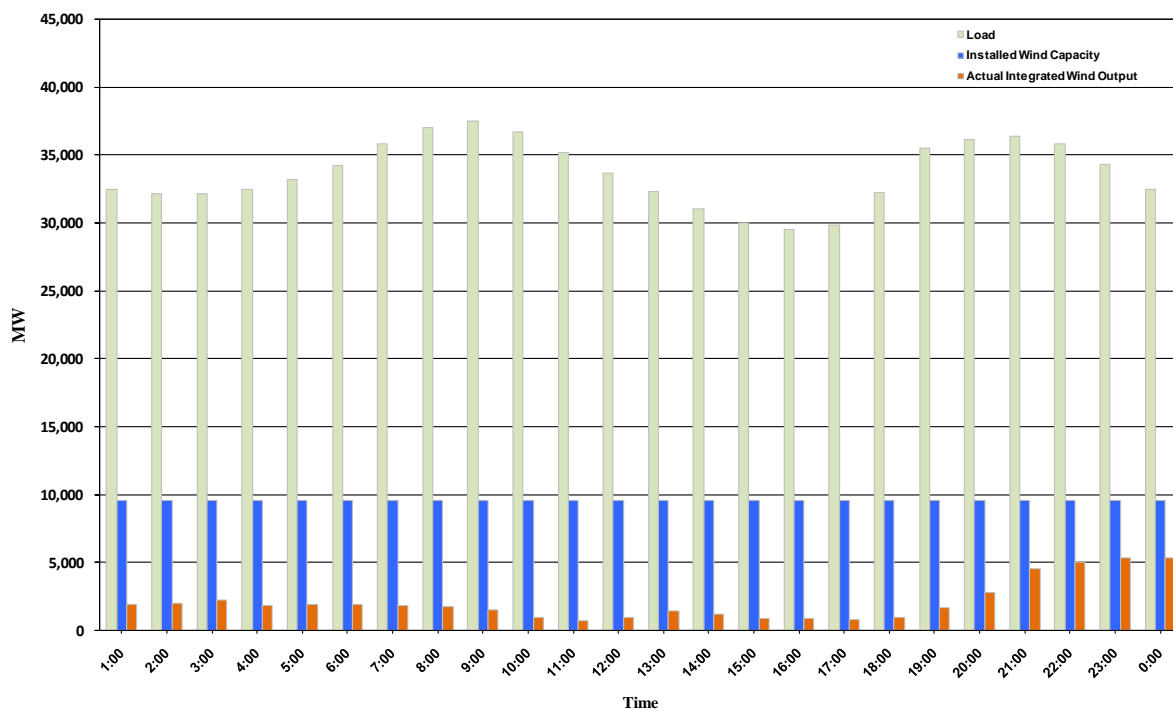




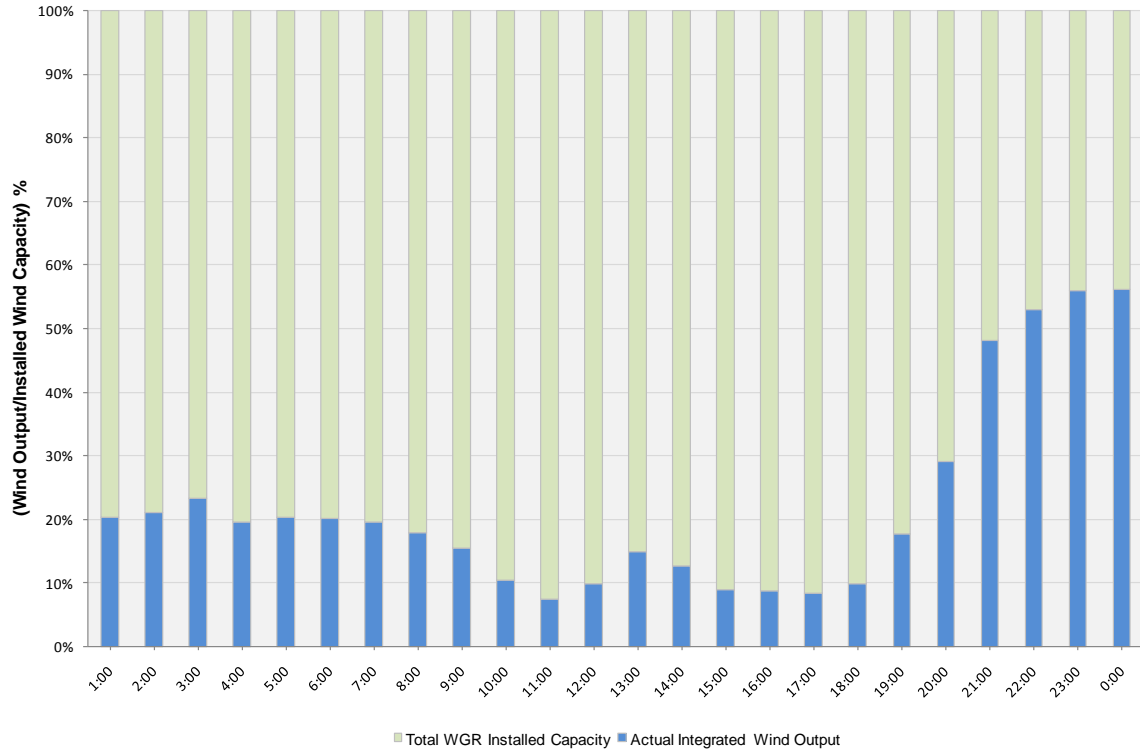
## ERCOT Grid Operations Wind Integration Report: 01/02/11

Peak Load	37,545 MW
Load Peak Hour	09
Wind Record 12/11/10	7,227 MW
Max Wind Value	5,521 MW
Wind Peak Hour	23:53:32
Wind Integration %	17.23

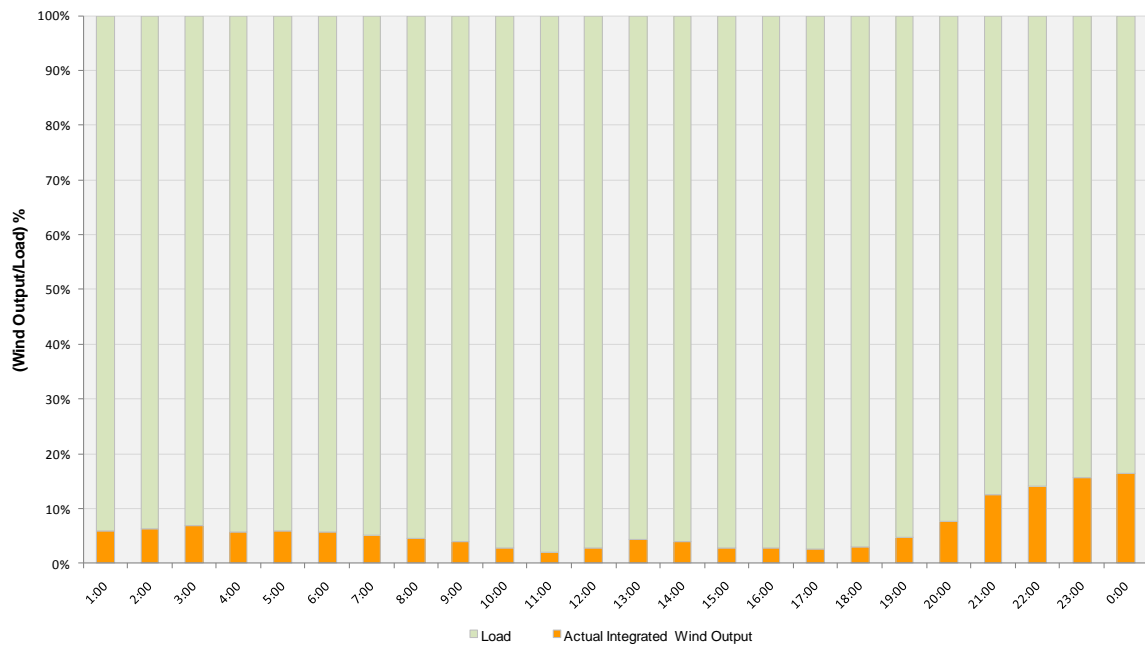
Hourly Average Actual Load vs. Actual Wind Output  
01-02-2011



**Actual Wind Output as a Percentage of the Total Installed Wind Capacity**  
**01-02-2011**



**Actual Wind Output as a Percentage of the ERCOT Load**  
**01-02-2011**



**ERCOT Load vs. Actual Wind Output 12/26/10 - 01/02/11**